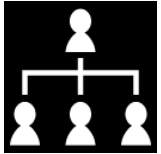


# TABLE RULES



Respect other players.



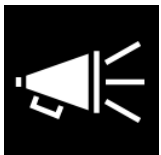
Respect GM decisions.



Don't interrupt.



Limit distractions.



Voice concerns & desires.

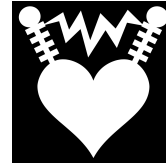


No sex, no torture, no \_\_\_\_\_.



If you say something, it happens. Speak carefully.

# ADVICE



Bring your character to life.



Do stuff. Be proactive.



Scheme often. Dice may fail, but good plans don't roll.



Ask questions. Take notes.



Embrace failure. Roll with it.



Fight dirty. Retreat. Survive.



The answer is not on your character sheet.